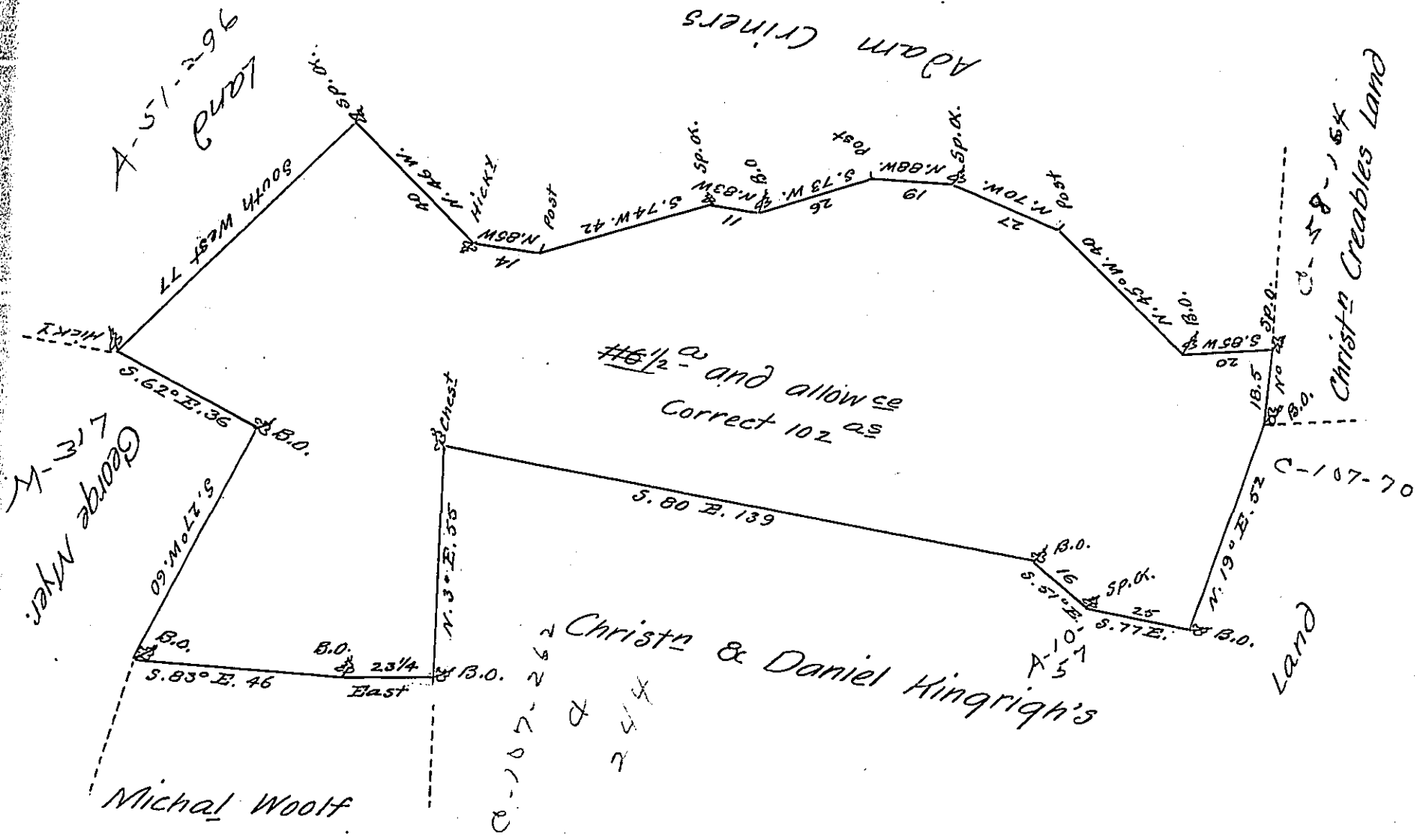


A-67-23



A Draught of Gasper Sheevlys Land situate in Warwick Township Lancaster County containing one Hundred ~~sixteen~~ <sup>& two</sup> acres and a Half with the usual allow<sup>se</sup> of six P Ct for Highways &c by Virtue of of the Honble the Proprietaries Warr<sup>t</sup> dated the Fourteenth day of March 1750. Survey'd this 16<sup>th</sup> day of April 1761.

P Bartrem Galbraith -

To Nich<sup>o</sup> Scull Esq<sup>e</sup>  
Surv<sup>r</sup> Gen<sup>l</sup>

IN TESTIMONY that the above is a copy of the original remaining on file in the Department of Internal Affairs of Pennsylvania, made conformably to an Act of Assembly approved the 16th day of February, 1833, I have hereunto set my Hand and caused the Seal of said Department to be affixed at Harrisburg, this Seventeenth day of November 1906

*Isaac R. Brown*  
Secretary of Internal Affairs.